

TRACKING PERFORMANCE IN REAL TIME

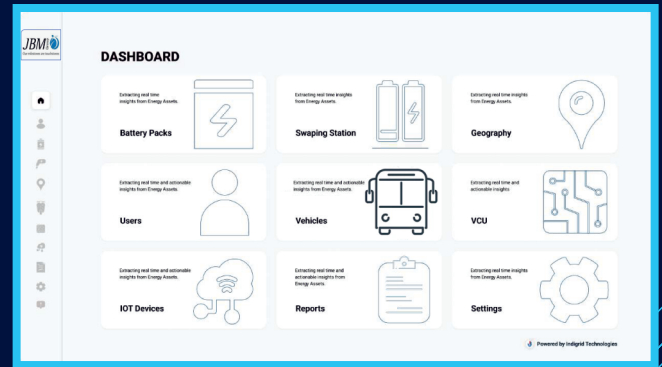
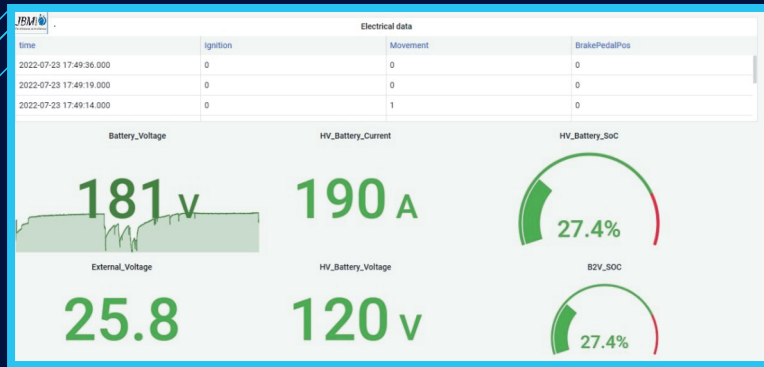


ADVANCE TELEMATICS

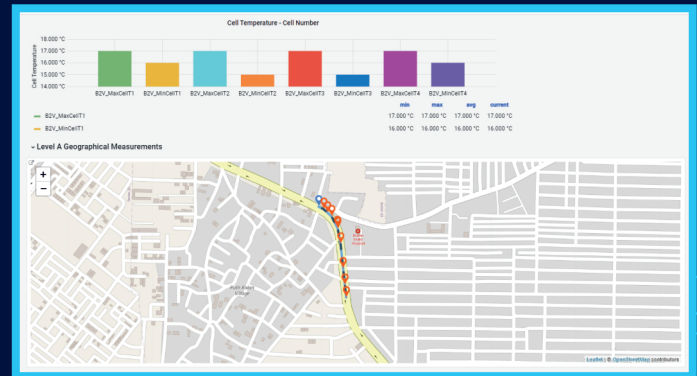
Telematics Solution for Electric Vehicles

JBMG as a market leader in Li-ion battery power systems, has high-performance reliable and top quality power train range, rounded by state-of-the-art battery storage and management solutions. We design, develop and produce Li-ion battery packs with telematics solutions for all application needs like E-bus, E-PV, E-2W and E-3W

Telematics solutions empower users to complete diagnostics and tracking with different business models.



This device comes with 4G (LTE Cat 1) network coverage including 2G (GSM) fall-back compatibility. The device is equipped with GNSS and LTE modules with external GNSS and LTE antennas. It will maximize your fleet efficiency with features like FMS CAN data (J1939), remote log file download, third party's device support, and dual SIM. The terminal is suitable for applications like EV buses, Li-Ion batteries and EV-2/3 wheelers.



Salient Features:

- Real-time tracking along with the ability to log 10,000+ records
- Diagnostics over CAN (ISO15765/J1939) to improve uptime to 100%
- Firmware Over The Air (FOTA) for remote firmware update
- Support for TLS for data security
- Configuration over CAN/DATA/SMS for remote configuration
- Warnings / Alerts for battery parameters for vehicle safety
- Web and mobile apps available
- AI-based battery predictive maintenance for preventive action
- Geo-fencing
- Theft prevention
- Configurable and encryption data storage
- Health reports
- Condition filtering

REG. OFFICE: JBM GREEN ENERGY SYSTEMS PVT. LTD. Plot No. 322, Sector 3 , Industrial phase 2, IMT Bawal-123501
CORPORATE OFFICE: Plot No. 9, Institutional Area, Sector 44, Delhi-NCR-122003
Tel: +91-124-4674500, 4674550, **Web:** www.jbmgroup.com