



SUSTAINABLY  
DRIVING MOBILITY

# JBM Group

JBM Group, a \$2.6bn global Indian conglomerate with 4 decades of excellence in driving product innovation & value across automotive, buses & electric vehicles, EV charging infrastructure, EV Aggregates, renewable energy and artificial intelligence. JBM has an infrastructure of 60 manufacturing plants, 5 engineering & design centres, and a presence in over 36 countries today.

JBM Group is one of the world's only integrated EV ecosystem players. The Group has developed an entire range of in-house EV solutions i.e. 'Well-to-Wheel', making us a one-stop solution provider in the E-mobility domain. JBM has been working purposefully towards building a comprehensive and intelligent EV ecosystem that seamlessly integrates Electric Vehicles, Battery Technology, Fast Charging Infrastructure, Power Electronics. We have developed in-house expertise in customizing these based on the operating pattern across various global geographies.

The advancement in technology has fundamentally improvised on how consumers are defining the modern age mobility requirements. Owing to this, we have accelerated the development of smart, connected, autonomous and shared mobility solutions.

JBM Group has been the vanguard of this evolution, pushing consensus for clean mobility and leading the growth chart of EV adoption in India. Our experience and expertise in this segment has allowed us to develop an end-to-end ecosystem for electric mobility.

Our goal is to create a joyful and holistic mobility experience for the masses by offering intelligent electric vehicles backed by a robust infrastructure ecosystem that will enable EVs to become the most robust and sustainable mode of public commuting. Our commitment is to contribute to this incredible vision and ensure that COP nations meet their Net Zero targets.

Since launching our first electric buses in 2018, we have significantly transformed how people commute. Our best-in-class, ultra-modern, and technologically superior electric buses have redefined the market standards and customers' aspirations by raising the bar in passenger comfort, safety, affordability and innovation. These characteristics reflect the true ethos of our products.

As part of our 1 Billion E-km Promise, we have crossed 50 million e-kilometres despite the pandemic-induced situation. We see ourselves attaining the set benchmark and promise in the next 3 years. Our zero-emission-vehicle (ZEVs) will save around 1200 tons of carbon dioxide and 420,000 litres of diesel for their lifetime.

We have recently accomplished a first-of-its-kind deployment of a complete end-to-end ecosystem in Leh at 3300 meters above sea level. The ecosystem deployed encompasses all critical development, from solar EV charging, energy storage systems, EV charging infrastructure and electric vehicles.

We are equipped with cutting-edge technology to optimize our customers' total cost of ownership (TCO) and drive value by creating customized solutions to address different needs. JBM's latest electric bus manufacturing facility in India, one of the world's most significant, is a testimony to our commitment to contribute to the incredible vision of Net Zero targets and make our E-Verse ecosystem a reality.

***The biggest revolution in the history of mobility has arrived.***

*“JBM’s E-Verse ecosystem is based on the philosophy of **‘Vasudhaiva Kutumbakam’** meaning ‘the world is one family.’ We endeavour to create futuristic and sustainable solutions for a happy & healthy planet.”*



## NISHANT ARYA

Vice-Chairman & Managing Director

# Product Technology Ecosystem



## Energy Efficient

Energy optimization using a direct drive configuration and a sophisticated vector control system.

Minimizing losses through IGBT-based liquid-cooled inverter.

Most efficient EBS for maximizing regeneration.



## Power Electronics

Efficient and safer operation using industry-proven IGBT and Silicon Carbide (SiC)-based technology.

Converters fitted with EMC filters to eliminate interface disturbances.

Components with low conduction losses leads to higher electrical efficiency.



## Efficient Thermal Management

Active cooling system to protect thermal runaways.

Energy efficient scroll compressor for efficient battery cooling.

Coolant flow optimized using integrated electric pump.



## High Energy Density

Advance Li-ion chemistry for high energy density.

Modular and scalable battery pack configuration improves the battery capacity.

State-of-the-art BMS algorithm.



## Embedded System

Better control over vehicle aggregates through optimized and accurate monitoring.

User friendly Interactive GUI dashboard with thin-film transistor technology.

Unparalleled flexibility for customization through model based software.



## Ultrafast Charging

Dual gun charging up to 500 kW power.

Safe charging with dedicated isolation management.

Highly efficient European-standard CCS2 charging system.

# Range of EV Buses & Applications



**We have diversified our range from city transport buses to coaches, school buses, staff buses and tarmac buses.**

**We stand by the World in its efforts to become a Net Zero emitter.**

ECO-LIFE 

Making your everyday commute comfortable.

Available in low-floor and high-floor platforms.

**72** passengers capacity.

**300 kms** daily coverage.

Exhibits high performance with reliability and safety.

**> 97%** uptime

World class IM and IL safety standard.

## ECO-LIFE

Making your everyday commute comfortable.



Available in low-floor and high-floor platforms.

**42** passengers capacity.

**300 kms** daily coverage.

Best in class performance.

**> 97%** uptime

World class IM and IL safety standard.



## e-SKYLIFE

A noise-free, sustainable transport for environmentally responsible passengers.

Available in the 12-meter low-floor and 9-meter low floor platform.

**72** passengers capacity.

**20 hrs** of operation per day

Offer quiet and environmentally pleasing ride to passengers.

World class IM and IL safety standard.



# GALAXY

Luxury Envisioned and Comfort redefined.



Available in 12-meter platform.

**45** passengers capacity.

**1000 kms** daily coverage.

ADAS, ECAS, EBS EVSC, hill hold for driver convenience

Bus torque & battery durability and enabled by our unique power management technology

World class IM and IL safety standard.



## e-BizLIFE

Sustainable and guilt-free rush hour commute.

Available in 9-meter & 12-meter platform.

**59** corporate leaders capacity.

**300 kms** daily coverage.

Offers a stress free and noiseless commute

Loaded with new-age-technology to ensure exceptional performance.

Majority of the product gets customized as per customer needs.

## e-SKOLIFE

We watch over the little angels while they travel.



Available in the  
9-meter high-floor &  
12-meter platform.

**76** students  
capacity.

**300 kms**  
daily coverage.

Built on best-in-class  
safety standards.

Adaptable to  
demographic and  
geographic diversity  
of India.

Majority of the  
product gets  
customized as per  
customer needs

# Customer Voice



## Vishal B. Khanama

Deputy Municipal Commissioner,  
Ahmedabad Janmarg Ltd

We are completely satisfied with the performance we are getting from JBM. The JBM depot has a positive environment plus the work culture of JBM is much better compared to other operators.



## M.N. Srinivasa

Chief Mechanical Officer, Central Office,  
Bengaluru Metropolitan Transport  
Corporation

In the history of Bangalore, this is the first of a kind arrangement where JBM has entered our city to operate electric vehicles with NTPC. The people of Bangalore are starting to appreciate this new age sustainable transport system and are eager to use these electric vehicles.



## Yogesh Kaduskar

General Manager,  
Navi Mumbai Municipal Transport

Because of JBM electric buses, we are able to save near about 5.2 million liters of diesel, and greenhouse gases emission has also reduced by 10,000 kg per day.



## Sanyam Gandhi

National Customer,  
Private Fleet Operator, PAN India

Passengers appreciate and acknowledge the fact that JBM has individual charging points and the electric buses have CCTV monitoring too. Their e-bus is not only Gujarat's but also India's first for employee e-mobility solution.

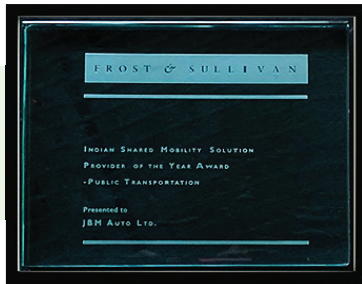


## Ishwar Chand

Head Procurement,  
Celebi Aviation, Turkey

Thanks to JBM for supplying electric tarmac coaches to Celebi. These are our first electric vehicles in India as tarmac coaches for airside operations. The buses were delivered to us by JBM within a short timeline of only 1 month and these buses are working well in our operations.

# Awards & Accolades



Frost & Sullivan - Shared Mobility Solution Provider of the Year Award - Public Transportation



JBM Auto Limited for ECO-LIFE Electric Bus



Most Innovative EV of the year- 'Technology & Innovation Excellence' by E-Mobility+ Media Group



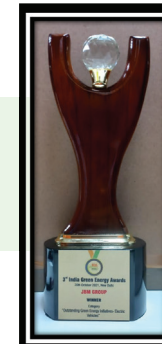
Best City in Urban Transport Initiatives - Navi Mumbai



Best Green Transport Initiative, Ahmedabad Janmarg Limited



Winner of Outstanding Green Energy Initiatives' in Electric Vehicles by Indian Federation of Green Energy awarded to JBM ECOLIFE



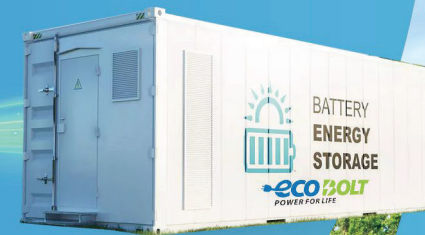
# Our Presence

*JBM has pledged to clock 1 billion e-kms in 3 years*



- ECO-LIFE
- e-SKYLIFE
- GALAXY
- e-BIZLIFE
- e-SKOCOLIFE

# E-Mobility Platform for a Sustainable Future





**Corp. Office** - Plot No.9, Institutional Area, Sector 44,  
Gurgaon, Haryana-122003

**Sales & Marketing Office** - JBM Electric Vehicle Pvt. Ltd.  
601, Hemkunt Chambers 89, Nehru Place, New Delhi  
110019



[www.jbmbuses.com](http://www.jbmbuses.com)  
[www.jbmgroup.com](http://www.jbmgroup.com)



[corp.communications@jbmgroup.com](mailto:corp.communications@jbmgroup.com)



Enquiry No.  
+91-9953110455 (East & South)  
+91-9953993923 (North)  
+91-8238144400 (West)

Landline No.  
+91-11-26427104, 42099900