



**LUXURY REDEFINED WITH
SUSTAINABLE MOBILITY**

ONE WORLD, ONE PURPOSE:
SUSTAINABLE MOBILITY



Mobility Overview

EMPOWERING PROGRESS. CONNECTED. SUSTAINABLE.

WELCOME TO THE JBM E-VERSE

JBM's E-Mobility Platform is a comprehensive solution that has been curated around product, technology, experience, and performance. Our Platform delivers and ensures efficient operations, reliable maintenance and easy access to charging infrastructure, thus accelerating the adoption of electric vehicle and setting a new standard for sustainable, scalable and high-performing mobility solutions. This approach guarantees customer delight through a holistic ecosystem that prioritises convenience, reliability and environmental responsibility.

Our pioneering initiatives towards steering Mobility 2.0 make us the preferred choice of millions of passengers seeking next-generation mobility solutions to drive a better tomorrow





LUXURY REDEFINED WITH SUSTAINABLE MOBILITY

Imagine a world where the journey itself is as captivating as the destination. A world where intercity travel isn't just about getting from one place to another, but a statement of luxury, comfort and choice. Here, we introduce to you 'Galaxy'—JBM's most dashing innovation yet. Galaxy is not just a luxury electric coach; it is a game-changer that redefines what intercity public transportation can be. We are on the cusp of a revolution where people no longer choose private commute out of necessity, but because they crave the unparalleled experience Galaxy offers. With this extraordinary creation, JBM is not just changing the way we travel; we are rewriting the future of intercity mobility, making public transport the most desirable, sustainable, and sophisticated choice for the modern traveller.

With Galaxy, we are breaking free from the conventional, bringing together cutting-edge technology and world-class craftsmanship to offer a journey that transcends ordinary travel. Every detail of Galaxy has been meticulously designed, from its high-performance electric powertrain to its luxurious interiors, ensuring a seamless experience that redefines comfort. We've blended advanced sustainability with luxury, creating a coach that delivers exceptional performance while keeping the environment at its heart.

But this is more than just a product; it is a vision. A vision where intercity travel is not a compromise, but a preferred choice. A vision where the hustle of private cars, the frustrations of traffic, and the environmental cost of personal transport become relics of the past. Galaxy invites you to embrace a future where travel is not just a necessity, but an experience that you look forward to—a journey that is effortless, luxurious, and sustainable.

At JBM, we don't just build vehicles; we build the future of mobility. And with Galaxy, we are ushering in a new era—one where public transport is elevated to an experience that exceeds every expectation. It's time to leave behind the conventional and choose a future that's as luxurious as it is sustainable. Welcome to the Galaxy experience, where the road ahead is nothing short of extraordinary.

ENGINEERED FOR EXCELLENCE, CRAFTED TO OUTPERFORM

At the heart of our innovation is a commitment to simplifying cutting-edge technology, making it not only affordable but also user-friendly.

JBM Electric Vehicle's mission is to drive decarbonization by transitioning from personal to public transport. With this goal in mind, it has leveraged its extensive knowledge of the EV industry and evolving consumer trends to build and strengthen a comprehensive and intelligent e-mobility proposition: the JBM E-Verse. This seamlessly integrates EVs, battery technology, power infrastructure, fast-charging systems, and power electronics, with expertise in customizing them for different geographies worldwide.



- Introducing the best-in-class, modern electric sleeper coach that sets new global benchmarks in performance, luxury, comfort, safety, and innovation.
- Powered by advanced Lithium-Ion battery packs, optimized for energy efficiency, delivering superior propulsion and leading to significant savings.
- Modular battery packs designed to cater to a wide range of customer requirements, ensuring flexibility and adaptability.
- Featuring CCS2 DC fast charging for seamless integration, ensuring quick turnaround times and enhanced operational efficiency.
- Equipped with a permanent magnet synchronous motor that offers high torque and exceptional power delivery for smooth, dynamic performance.
- Our integrated Battery Management System (BMS), Vehicle Control Unit (VCU), and telematics work together to ensure optimal vehicle health, safety, and performance.
- Global Service Network that enables its reach across the Globe.





Mobility 2.0

LEADING THE E-MOBILITY TRANSFORMATION

India's ambitious 'Viksit Bharat' vision—a developed India by 2047 prioritises e-mobility alongside digital payments and high-speed motorways to foster inclusive development. India is also aiming for Net Zero by 2070, making clean mobility solutions a must.

JBM Electric Vehicles is paving the way for India's mobility transition. With its focus on bringing ground-breaking innovation to public transport, a holistic ecosystem approach, and a presence across all categories of e-buses, the Company is revolutionising transportation in India. JBM Electric Vehicles is spearheading 'Mobility 2.0' by promoting cleaner, greener, and safer transportation. The Company is leading the change with indigenously developed vehicle technology, advanced battery systems, efficient charging infrastructure, operation, and maintenance services, and cutting-edge automotive products.

Backed by its superior manufacturing assets—the world's largest dedicated integrated EV Ecosystem and Electric bus manufacturing facility (excluding China)—and comprehensive in-house capabilities, JBM Electric Vehicles is redefining the public transportation dynamics and setting new global standards. Safety, comfort, and reliability will transform public transport, making it a preferred choice of commuters over personal vehicles, thus paving the way for more sustainable mobility choices.

The Company's commitment to a greener future includes expediting its internal transformation to achieve its ambitious goal of becoming Net Zero by 2040, which is 30 years ahead of the national timeline. This relentless pursuit of sustainability underlines its dedication to empowering global e-mobility transformation and paving the way for a cleaner, healthier, and more promising tomorrow.



GLOBAL FOOT PRINT

JBM EV is building a Global foot print through Product Excellence and has deployed over 10000 electric buses across various geographies and applications globally. Many developed and developing countries are at the forefront of adopting sustainable, new-age mobility for mitigating the climate change and decarbonized trasporation. A strong mandate to transition to electric vehicles by the governments has led to a surge in demand for electric buses. However, legacy issues within the conventional bus industry are creating a significant supply demand gap. JBM EV is well-placed to seize this market opportunity. Its EV Ecosystem solution currently unmatched by other players is a compelling alternative to existing international players.

Our Global teams are placed in APAC, Europe, Middle East and Asia Pacific. Although India will remain one of the key markets, JBM EV intends to capitalise on the emerging market requirements in the electric-mobility domain, gaining new market access and expanding market share.

We have carried our product trials across multiple geographies in Europe, Middle East and Asia Pacific with renowned bus operators. These test drives have highlighted the adaptability of JBM e-buses to varying road conditions, climates and operational patterns. The success of these test trials have established JBM Electric Buses a viable solution for public transportation worldwide.

We have developed customised products for various applications such as high-end luxury coach, intercity bus, city bus, staff bus, school bus and Medical Mobile Unit. This marks the Company's foray into various developing and emerging markets with an array of products and solutions specifically tailored to provide end-to-end e-mobility ecosystem solutions



JBM ELECTRIC VEHICLES PRIVATE LIMITED

OUR MANUFACTURING STRENGTH

- Annual production capacity of 20,000 for different type of electric vehicles.
- Eco friendly plant Platinum Green certificate (Zero discharge)
- State of the art Innovation centers & test labs
- Highest plant productivity by using automation and frugal engineering
- Integrated electronics manufacturing & vendor park
- Digitalized plant with Industry 4.0, MES and virtual manufacturing



TOTAL COST OF OWNERSHIP

A market analysis conducted in partnership with D&B, a leading business information provider, indicates strong market potential for Coach & Intercity buses across the globe in standard sizes. JBM Electric Vehicle is transitioning to zero-carbon fleets through its competitive solutions. JBM Electric Vehicle provides best-in-class, seamlessly integrated EV platform solutions spread across the country,

offering optimal operating expenses with maximum performance across different terrains and temperature zones. The platform business also provides Electric Mobility-as-a-Service (eMaaS) in the B2G and B2B domains.



Crafting Comfort,
Defining Excellence.

GALAXY 

KEY FEATURES



GLOBAL SERVICE NETWORK



2 LAKH + KMS EVERY YEAR



20 SLEEPER +
22 SEATING CAPACITY



EXEMPLARY PASSENGER
COMFORT



ULTRA-FAST CHARGING



WORLD-CLASS HV
SAFETY



Where Elegance Meets
Unparalleled Comfort

GALAXY 

KEY FEATURES

 1000~ 1500 KMS PER DAY

 ULTRAFAST CHARGING ~ 60 MINS

 LUXURY ON WHEELS

 40~60 PASSENGERS

 BEST IN CLASS HV SAFETY

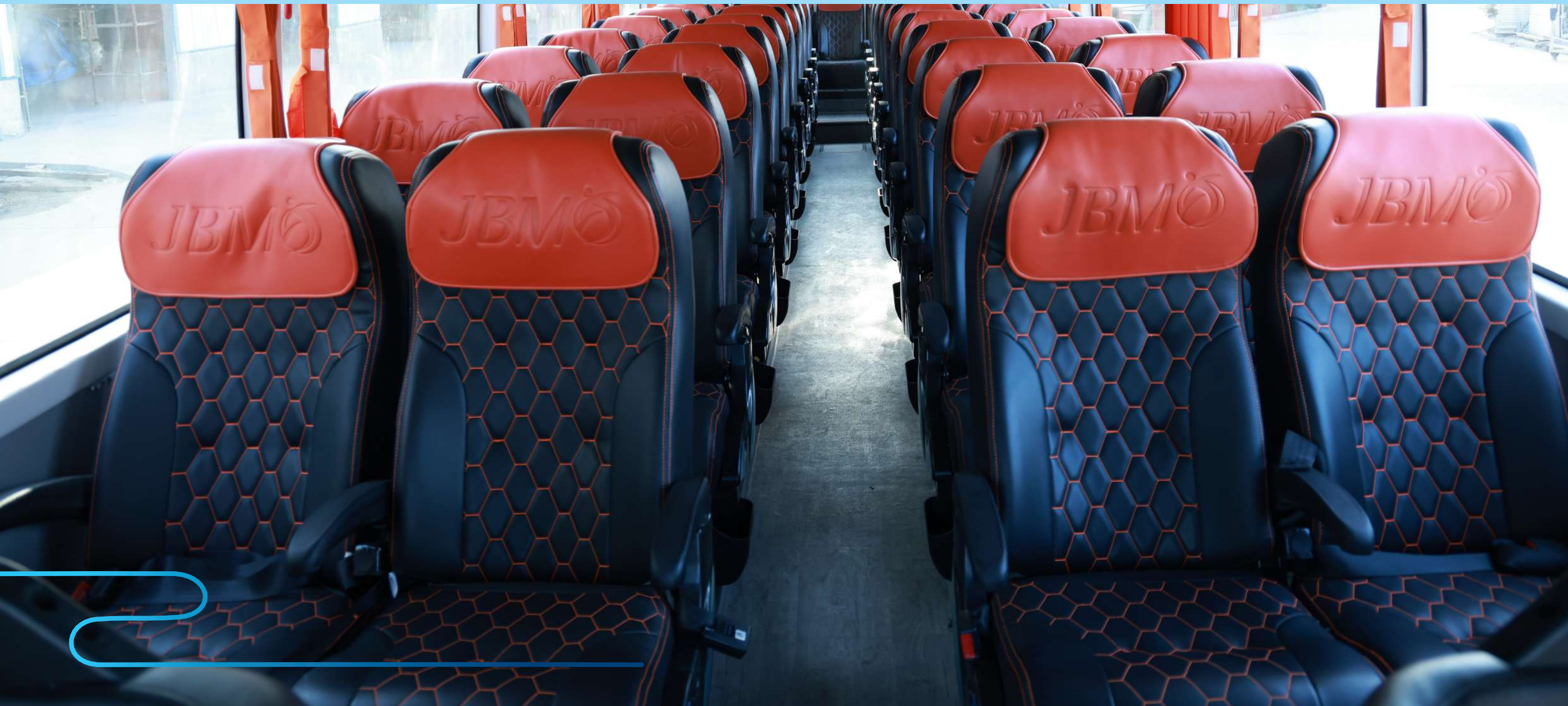
 ~95% UPTIME



UNMATCHED COMFORT, INNOVATIVELY CRAFTED FOR LUXURIOUS LIVING

Experience a ride like never before with our state-of-the-art electronically controlled air suspension, delivering an ultra-smooth and serene journey.

- Indulge in luxury reclining seats with built-in calf support for unmatched relaxation.
- Enjoy personalized reading lamps and adjustable AC louvers, giving you complete control over your comfort.
- Spacious legroom designed for maximum comfort, ensuring a premium long-distance travel experience.



REDEFINING SAFETY, ELEVATING PROTECTION

Carefully curated and developed, our vehicles are designed to provide unmatched levels of safety, ensuring peace of mind with every journey.



- Equipped with Electronic Braking System (EBS) and Anti-lock Braking System (ABS) paired with disc brakes, offering superior road control and stability.
- Advanced high-temperature cut-off for the battery and FDSS, ensuring optimal performance and preventing overheating.
- Integrated surveillance cameras and Vehicle Tracking System (VTS) to monitor and manage bus operations for enhanced security.
- Adhering to world-class IM and IL safety standards, providing the highest level of protection.
- Thoroughly tested for 1 million kilometers—both virtually and physically—to guarantee durability and reliability.
- Our Product Life-cycle Management (PLM) ensures 100% reliability and consistent safety throughout the vehicle's lifespan.
- Rigorous side-impact and rollover safety testing confirms compliance with the highest safety benchmarks.
- Large glass panels minimize blind zones, enhancing visibility and driving safety.

With every detail engineered for security, we've redefined safety to deliver confidence, reliability, and total peace of mind.

YOUR TRUSTED FLEET, ALWAYS ASSURED

Revolutionizing operations with cutting-edge technology, we provide an AI-based, real-time vehicle and fleet monitoring system to ensure efficiency and reliability at every step.



- Advanced telematics offering 24/7 access to the vehicle's health status, keeping you informed around the clock.
- Seamless firmware updates over the air, ensuring your fleet stays up-to-date with the latest features and improvements.
- Secure, configurable data storage with geo-fencing for enhanced control and privacy.
- On-board diagnostic system that proactively detects and resolves issues for minimal downtime.
- PAN India 3S after-sales network providing reliable service and support nationwide.
- Web and mobile apps for instant updates, enabling real-time tracking and monitoring for ultimate convenience.



TECHNICAL SPECIFICATION

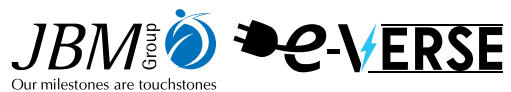
Vehicle Description	Galaxy (12M Luxury Coach)
Variant	Seater
Vehicle Dimensions (L x W x H)	12400 mm X 2590 mm X 3695 mm
Wheel Base	6350 mm
Floor Height	1200 mm
Seating Capacity	49 Premium Reclining (2X2) + Driver + Co-driver
Front Axle	Heavy Duty Rigid Axle
Rear Axle	Fully Floating Banjo, Single reduction
Suspension	Front & Rear Electronically Controlled Air Suspension
Brakes	All Disc Brakes with ABS, EBS, EVSC & fully air brakes
Kneeling System	Available
Tyres (Front & Rear)	295/80 R22.5 Radial Tubeless
Structure & Bus Body	"High strength Corrosion resistant monocoque structure and Bus body as per AIS 052"
Exterior Panels	Front & Rear FRP; Side panel Aluminium, Stretched steel (optional)
Emergency Exits	Yes, As per AIS-052
Passenger doors	Automatic In-Swing door
Traction Motor	Permanent magnet synchronous Motor, 250 KW Max. Power
Steering System	Electro Hydraulic Power Steering with Tilt & Telescopic Adjustment
Max Speed	80 kmph
Battery Type	Advanced Li-ion Chemistry
Regenerative Braking System	Yes
Charging System	Plug-in fast charging (CCS-2)
HVAC	Yes
Driver's Comfort & Convenience	ECAS, EBS, EVSC, Hill hold, ADAS II (optional), Alcohol Detector
Passenger Comfort & Convenience	Premium reclining seat with Calf support (optional), Individual AC Louver, Reading Lamp & USB Charging, Vehicle Tracking, Bus kneeling for ease of boarding
HV Safety	Protection against Surge, Short Circuit, Overload Constant insulation monitoring and Interlock for safety
Passenger's Comfort & Convenience	Premium reclining seat with Calf support (optional), Individual AC Louver, Reading Lamp & USB Charging, Vehicle Tracking, Bus kneeling for ease of boarding
HV Safety	Protection against Surge, Short Circuit, Overload Constant insulation monitoring and Interlock for safety



TECHNICAL SPECIFICATION

Vehicle Description	Galaxy (12M Luxury Coach)
Variant	Seater Sleeper
Vehicle Dimensions (L x W x H)	12400 mm X 2590 mm X 4050 mm
Wheel Base	6350 mm
Floor Height	1200 mm
Seating Capacity	20 Sleeper berths (2x1) + 22 Premium Reclining Seat with Calf Support + Driver + Co-driver
Front Axle	Heavy Duty Rigid Axle
Rear Axle	Fully Floating Banjo, Single reduction
Suspension	Front & Rear Electronically Controlled Air Suspension
Brakes	All Disc Brakes with ABS, EBS, EVSC & fully air brakes
Kneeling System	Available
Tyres (Front & Rear)	295/80 R22.5 Radial Tubeless
Structure & Bus Body	"High strength Corrosion resistant monocoque structure and Bus body as per AIS 052"
Exterior Panels	Front & Rear FRP; Side panel Aluminium, Stretched steel (optional)
Emergency Exits	Yes, As per AIS-052
Passenger doors	Automatic In-Swing door
Traction Motor	Permanent magnet synchronous Motor, 250 KW Max. Power
Steering System	Electro Hydraulic Power Steering with Tilt & Telescopic Adjustment
Max Speed	80 kmph
Battery Type	Advanced Li-ion Chemistry
Regenerative Braking System	Yes
Charging System	Plug-in fast charging (CCS-2)
HVAC	Yes
Driver's Comfort & Convenience	ECAS, EBS, EVSC, Hill hold, ADAS II (optional), Alcohol Detector
Passenger Comfort & Convenience	Individual AC Louver, Reading Lamp & USB Charging, Vehicle Tracking, Bus kneeling for ease of boarding, ambient lights, Individual TV Screens (optional), Premium reclining seat with Calf support, Sleeper berths with Cushion & Head Rest
HV Safety	Protection against Surge, Short Circuit, Overload Constant insulation monitoring and Interlock for safety
Passenger's Comfort & Convenience	Individual AC Louver, Reading Lamp & USB Charging, Vehicle Tracking, Bus kneeling for ease of boarding, ambient lights, Individual TV Screens (optional), Premium reclining seat with Calf support, Sleeper berths with Cushion & Head Rest



**Corp. Office**

Plot No.9, Institutional Area,
Sector 44, Delhi-NCR - 122003

Sales & Marketing Office

JBM Electric Vehicles Pvt. Ltd.
601, Hemkunt Chambers 89,
Nehru Place, Delhi-NCR - 110019

www.jbmbuses.com
www.jbmgroup.com

corp.communications@jbmgroupp.com

Enquiry No.
+91-9953110455 (East & South)
+91-9953993923 (North)
+91-8238144400 (West)

Landline No.
+91-11-26427104, 42099900

TABLE OF CONTENT

INNOVATION THROUGH SCIENCE,
TECHNOLOGY & RESEARCH 01

ENERGY & SUSTAINABILITY 03

RENEWABLE ENERGY 05

LEADING THE WAY IN
SUSTAINABLE E-MOBILITY 07

EMPOWERING GLOBAL MOBILITY 09

ENERGIZING THE FUTURE
OF EV CHARGING 11

ACCELERATING E-MOBILITY
WITH DIGITAL INNOVATION 13

WORLD WIDE FOOTPRINT 15

LUXURY ENVISIONED AND
COMFORT REDEFINED 17

MAKING YOUR EVERYDAY
COMMUTE COMFORTABLE 19

PRODUCT TECHNOLOGY
ECOSYSTEM 21

APPLICATION 23

PRODUCT | PRODUCT SYSTEM 25



Our Vision

Expanding Leadership in our business by creating an agile environment that delivers excellence and delight to stakeholders through the power of people, innovation and technology.



Our Businesses

Auto Components & Systems

Tool Room Division

OEM Division



Our Values

Respect & Teamwork

Foster trust, appreciate diversity of ideas, harness individual potential and channelize it to accomplish greater group goals.

Integrity & Ethics

The conscience to remain honest, sincere and just in conduct at all times.

Ownership & Commitment

Accountability towards undertaken tasks with complete responsibility of outcomes.

Customer Trust & Delight

Meet commitments, be sensitive to customer needs, address issues with clarity and speed.

Safe & Green

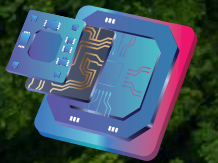
A conscientious corporate citizen that prioritizes People Safety, Environment Conservation and Community Welfare.

JBM ELECTRIC BUS FACILITY: DRIVING THE FUTURE OF SUSTAINABLE MOBILITY



Make Globalization a Mantra

With connected systems driving universal sustainability



Adopt and Develop Latest Technological Systems

Powering new-age innovation-led future mobility



Infuse International Expertize

To create products which become benchmarks globally



Accelerate Organizational Transformation

Enabling high levels of agility and adaptability coupled with decision making

We believe this approach will power our e-mobility journey in the coming years. As demand aggregation brings economies of scale, the electric bus market is expected to witness more than 70% penetration by 2030 in multiple applications like city, intercity, staff, tarmac, school among many other products.

ACING THE NEXT WITH JBM ACES

JBM Auto continues to lead from the front to propel impactful transformation beyond its business segments, to scale the next level of growth in the field of e-mobility.



ARTIFICIAL INTELLIGENCE AND INDUSTRY 4.0
World Class safety, competitiveness & business excellence



CONNECTED VIA DIGITIZATION
Big data analytics, connectivity, cloud computing & real-time performance



ELECTRIFICATION
E-bus technology driven by E-Powertrains, Lithium batteries, EV Charging, Power Electronics, etc



SHARED MOBILITY
E- Public transport for the common man used by 90% of India's population



COMPANY OVERVIEW

Welcome to JBM Electric Vehicles, a dynamic \$2.6 billion global Indian conglomerate having its presence in 37 countries with a rich four-decade legacy. Our mission is to serve a global audience with a special focus on the electrifying future of mobility. We are dedicated to driving innovation and delivering exceptional value across diverse industries, including automotive, buses, electric vehicles, EV charging infrastructure, renewable energy, and artificial intelligence.

At JBM Electric Vehicles, we are at the forefront of the electric vehicle revolution, offering a comprehensive, in-house EV ecosystem aligned to our 'Well-to-Wheel' philosophy. As a one-stop solution provider in E-mobility, we specialize in manufacturing Electric Vehicles, R&D in Battery Technology, Fast Charging Infrastructure Solutions, and Power Electronics. We specialise in customizing solutions to meet the unique needs of global markets.

Our commitment to innovation is driven by embracing smart, connected, autonomous, and shared mobility solutions. Clean mobility is our guiding principle, and we are dedicated to driving EV adoption while creating an end-to-end electric mobility ecosystem. Our mission is to provide intelligent electric vehicles with robust infrastructure support, making EVs the most sustainable mode of public commuting. As a global corporate citizen, we are fully committed to contributing to the Net Zero targets of COP nations.

Our electric buses introduced in 2018, have redefined the public commuting experience. These best-in-class electric buses have set new standards for passenger comfort, safety, affordability, and innovation. They are a testament to our unwavering commitment to excellence. Under our 1 Billion e-km promise, we have already achieved 100 million e-kms, having served 1 Billion bus commuters, thereby, saving 50 million litres of fossil fuel with our zero-emission electric buses. And this is just a touchstone for newer milestones we have planned for our ongoing journey.



With our global leadership team strategically actioning our Net Zero 2040 agenda, JBM Electric Vehicles is well poised to take a paradigm shift in redefining new benchmarks of customer trust & delight. Leveraging cutting-edge technology, we optimize customers' total cost of ownership (TCO), providing customized solutions to meet diverse needs. Our state-of-the-art electric bus manufacturing facility in India, one of the world's largest, reflects our unwavering dedication to our Net Zero targets.

Inclusivity is at the core of our values. We empower communities and promote social and economic inclusivity. Our sustainable practices and investments in renewable energy underscore our dedication to a fairer society. For us, the green economy is not just a buzzword; it's a responsibility. By investing in renewables and eco-friendly practices, we minimize our environmental impact and foster a green economy that generates jobs and supports sustainable development.

At JBM Electric Vehicles, our commitment to inclusivity and the green economy is not just a strategic choice; it is our moral imperative. In our E-VERSE-of-Things, we are not just a participant but a pioneer in shaping the future of transportation. Join us in shaping a sustainable, innovative future for all, as we serve global customers and lead the way at Bus World 2023 with EV ECOSYSTEM as a core agenda and embrace the electrifying E-VERSE of mobility.



NISHANT ARYA

Vice-Chairman & Managing Director

The global automotive industry is at the cusp of an extraordinary revolution, and JBM Electric Vehicles is at the forefront of this transformative journey. The green energy transition taking place globally is powering a new growth momentum, with path breaking technological advancements in electric vehicles. This transition coupled with the massive investments taking place in alternative clean energy solutions the world over, is fuelling the auto sector to align itself with speed and dexterity to the transforming ecosystem. The demand for sustainable and clean mobility is taking the centerstage, necessitating a sharper focus on adoption of new technologies and adaptation to the emerging trends. This, in turn, is driving a new level of innovation by the industry to match the evolving consumer preferences and aspirations.

In this dynamic landscape, the G20 presidency of India has emerged as a motivating force, inspiring us to be catalysts of change. India's leadership in the G20, with a focus on green hydrogen and climate financing, aligns perfectly with our vision at JBM Electric Vehicles. We believe in the G20 theme, "One Earth, One Family, One Future" which underscores the importance of collective global efforts to address pressing issues such as pollution and climate change. It resonates with our commitment to sustainability and innovation, and we are ready to seize the future.

JBM Electric Vehicles Business is spearheading the electric vehicle revolution through JBM E-Verse, an ecosystem solution designed to revolutionize electric mobility from end to end. Our mission is to set new global benchmarks for sustainable public mobility. We envision a world where public transport is not merely a necessity but a preferred choice for travellers. JBM Electric Vehicles has been a pioneer in the e-mobility segment, redefining public transportation with our best-in-class, modern, and technologically superior electric buses. These vehicles have set industry benchmarks in passenger comfort, safety, affordability, and innovation, reflecting the core values of our products.

At the core of JBM Electric Vehicles is our belief in our ability to celebrate our customers by delivering reliable and everlasting experiences. Our journey is steered by a robust nucleus of world-class customer experience, built on a foundation of expertise and experience. Our continuous investments in Technology, Innovative business models, and People (TIP) have consistently propelled our growth trajectory.

As we align ourselves with emerging trends and strive to set new benchmarks, we are enhancing our strength by incorporating frugal manufacturing and digitalization. These initiatives are reducing time to market for our customers and reinforcing our commitment to innovation and efficiency.

I welcome you to the JBM e-verse, the complete EV ecosystem universe, and invite you to partner with us in creating accelerating experiences. Together, we can redefine the future of mobility and make a positive impact on our world and future generations.



S T E T N O O

INNOVATION THROUGH SCIENCE, TECHNOLOGY & RESEARCH	01
ENERGY & SUSTAINABILITY	03
RENEWABLE ENERGY	05
LEADING THE WAY IN SUSTAINABLE E-MOBILITY	07
EMPOWERING GLOBAL MOBILITY	09
ENERGIZING THE FUTURE OF EV CHARGING	11
ACCELERATING E-MOBILITY WITH DIGITAL INNOVATION	13

WORLD WIDE FOOTPRINT	15
LUXURY ENVISIONED AND COMFORT REDEFINED	17
MAKING YOUR EVERYDAY COMMUTE COMFORTABLE	19
PRODUCT TECHNOLOGY ECOSYSTEM	21
APPLICATION	23
PRODUCT PRODUCT SYSTEM	25

INNOVATION THROUGH SCIENCE, TECHNOLOGY & RESEARCH

Technology, Innovative business models and People (TIP), happen to be JBM's springboard for achieving leadership position. As an organisation, JBM Electric Vehicles has swiftly aligned itself to these emerging trends and has become more robust by adopting frugal engineering practices, digitalizing production and enabling enhanced processes, thereby reducing the time to market. Consistent innovation, constant learning and benchmarking best technology in all its endeavours has been the cornerstone for JBM's sustained and consistent growth over the decades. JBM believes in acting as a one-stop shop encapsulating end to end solutions to attain and sustain customer delight.

At JBM Electric Vehicles, we are at the forefront of the electric vehicle revolution, offering a comprehensive, in-house EV ecosystem aligned to our 'Well-to-Wheel' philosophy. As a one-stop solution provider in E-mobility, we specialize in manufacturing Electric Vehicles,

Battery Technology, Power Infra, Fast Charging Infrastructure Solutions and Power Electronics. We specialise in customizing solutions to meet the unique needs of global markets.

Our commitment to innovation is driven by embracing smart, connected, autonomous, and shared mobility solutions. Clean mobility is our guiding principle, and we are dedicated to driving EV adoption by way of our electric mobility ecosystem – E-Verse. Our mission is to provide intelligent electric vehicles with robust infrastructure support, making EVs the most sustainable mode of public transport. As a global corporate citizen, we are fully committed to contributing to the Net Zero targets of COP nations.





ENERGY & SUSTAINABILITY

At JBM Electric Vehicles, we are dedicated to driving the energy transition and fostering a cleaner world for future generations. Our mission is to play an even more significant role in this transformative landscape by utilizing technical applications, research and technology to make a lasting impact.

Beyond electric transport, we focus on renewable energy, energy storage and the development of charging infrastructure to empower green transportation systems. Our commitment extends to manufacturing electric batteries, creating holistic electric mobility systems (comprising vehicles and chargers) as exemplified by our E-Verse theme, building and converting hybrid energy systems, harnessing solar power and wind turbines as renewable energy sources, and efficiently recovering industrial residual heat. These solutions are integral to our commitment to sustainable and clean energy and forms part of our e-Mobility ecosystem mantra.

Moreover, we prioritize reuse and recycling. Our research and development efforts center on repurposing used batteries to give them a second life as energy storage resources for our clients worldwide.

JBM Electric Vehicles remains committed to expanding and advancing these initiatives to shape a better world, both today and for generations to come.

RENEWABLE ENERGY: FROM GENERATION TO EMPOWERING THE E-MOBILITY ECOSYSTEM

At JBM Electric Vehicles Pvt Ltd, we understand that renewable energy is not just a choice; it's a vital catalyst for driving the e-mobility ecosystem. We are committed to harnessing renewable energy sources, with a primary emphasis on solar and wind energy, to power our journey toward a cleaner and more sustainable future.

Solar Power: We have invested significantly in solar energy infrastructure. Our solar project investments harness the abundant energy from the sun, converting it into clean, sustainable power. This renewable energy source not only reduces our carbon footprint but also plays a crucial role in energizing our manufacturing operations and contribute to electric grids for us to draw energy for our electric vehicle (EV) ecosystem. From charging infrastructure to electrifying our buses, solar power is integral to our vision of a greener and more efficient future.

Wind Energy: Windmills are another cornerstone of our renewable energy efforts. Harnessing the power of the wind, we generate clean electricity and contribute to the National Grids. The credits assist us to use this renewable energy source to drive our operations and charge our EV infrastructure solutions. Wind energy aligns seamlessly with our commitment to sustainability, offering a reliable and environmentally friendly source of power

Waste-to-Energy Investment: In addition to solar and wind energy, we actively invest in waste-to-energy projects. These projects transform waste materials into valuable energy resources, further diversifying our renewable energy portfolio. By efficiently managing waste and converting it into clean energy, we not only minimize environmental impact but also bolster our e-mobility ecosystem in lieu of our sustainable renewable power contribution

Our dedication to renewable energy is not just an investment; it's a pledge to reduce our environmental footprint and promote sustainable practices. By integrating solar, wind, and waste-to-energy sources into our operations, we are actively advancing the growth and success of the e-mobility ecosystem while contributing to a cleaner, greener world for present and future generations.





LEADING THE WAY IN SUSTAINABLE E-MOBILITY

In an era where mobility is the lifeblood of society's economic functions, JBM Electric Vehicles Pvt Ltd stands as a formidable force in pioneering sustainable e-mobility solutions. Our unwavering commitment to cleaner, more accessible, and healthier transportation aligns with our mission to leave a lasting positive impact on our world.

We embarked on this journey as a component supplier, but our expertise in assembling automobiles for global Original Equipment Manufacturers (OEMs) has propelled us to the forefront of the e-mobility revolution. Today, we are leaders in the development and production of electric buses and the comprehensive EV ecosystem that supports them. With our immense potential and scale, we are poised to play a pivotal role in driving the widespread adoption of electric buses on a global scale.

As we move forward with boundless energy, we are not merely focused on building vehicles; we are at the forefront of addressing intelligent mobility challenges. Our expertise spans

a spectrum of smart mobility issues, including vehicle design, electrification, connectivity, autonomous driving, and the concept of mobility as a service. These innovations are shaping the future of transportation, making it not only cleaner but also smarter.

In-house design capabilities empower us to create mobility solutions that extend beyond buses to other forms of transport. Moreover, our vehicles are evolving into data collectors, providing valuable insights not only on their own performance but also on their broader environmental impact. This forward-thinking approach contributes to the creation of liveable smart cities where sustainability and continuity are paramount.

In essence, everything we do in the realm of mobility is guided by a commitment to smart, sustainable solutions. Our aim is to set new benchmarks in sustainability and continuity, ensuring that we pass on a cleaner and better world to the next generation. At JBM Electric Vehicles Pvt Ltd, we are leading the way in sustainable e-mobility, shaping a future where mobility is not just a necessity but a catalyst for positive change.

EMPOWERING GLOBAL MOBILITY: JBM ELECTRIC VEHICLES PVT LTD'S ELECTRIC VEHICLE ECOSYSTEM

In an era marked by a collective global shift towards sustainable transportation, JBM Electric Vehicles Pvt Ltd stands as a driving force behind the Electric Vehicle (EV) revolution. Spearheading this transformative journey is our flagship initiative, JBM E-Verse—an ecosystem solution that embodies end-to-end convergence for electric mobility.

Our mission is ambitious yet clear: to transform public mobility on a global scale by creating innovative and sustainable benchmarks. We envision a world where public transportation transcends necessity and becomes the preferred choice for travelers. As a testament to our commitment, JBM Electric Vehicles Pvt Ltd has emerged as a pathbreaker in the e-mobility segment, reshaping how people commute.

At the core of our transformational journey are our best-in-class, modern, and technologically superior electric buses—a testament to our unwavering dedication to innovation and sustainability. These buses have not only redefined public transportation but have also established industry benchmarks in passenger comfort, safety, affordability, and innovation.

A Global Perspective: JBM Electric Vehicles Pvt Ltd is proud to hold over 50% market share in the bus segment in India, the world's fifth-largest economy. This remarkable achievement is propelled by our pioneering thinking and status as a first mover in the EV ecosystem. Our electric buses, part of the JBM E-Verse ecosystem, are poised to make an even more significant impact on a global scale.

Innovative Capabilities: Our electric buses are not just vehicles; they are innovatively crafted around our in-house capabilities. These capabilities encompass fast charging infrastructure, high-efficiency Li-ion EV batteries, robust power infrastructure, and an extensive service network ensuring round-the-clock support with negligible downtime. These strengths position us perfectly to achieve our ambitious goal of clocking 1 billion e-kilometers by 2025-26, building upon the 50 million green kilometers already achieved by JBM e-buses—a journey that continues to unfold.

As we chart this transformative path, JBM Electric Vehicles Pvt Ltd remains steadfast in its commitment to shaping a sustainable and innovative future for global mobility. Our electric vehicle ecosystem represents not just the future of transportation but a promise of a cleaner, greener, and more connected world, where public mobility is a choice that makes a difference.

ENERGIZING THE FUTURE OF EV CHARGING: SAAS SOLUTION

In our relentless pursuit of digitization and enhancing the customer E-Verse experience, we proudly introduce our cutting-edge application for EV chargers. The goal is to revolutionize the way one charges the electric vehicle, to make it seamless and efficient. **Locate Chargers Anytime, Anywhere:** With a user-friendly mobile application, finding JBM chargers is a breeze. Whether you're on the road or planning your next journey, our app puts the power of charging in your hands, literally. So goodbye to range anxiety as one can effortlessly locate JBM's charging stations

Choose Your Charger, Your Way: Our application empowers end-users to select charging that best suit their preferences. Whether one is looking for a rapid charge or prefer a slower, steadier pace, the app provides with the flexibility to make a choice.

Complete Charger Details: Transparency is key. The application not only offers the

convenience of finding chargers but also provides comprehensive details about each charger in the network. This information helps the dedicated team proactively maintain and manage services, ensuring the chargers are always in top-notch condition.

For Businesses and Beyond: While the application currently caters to the business-to-business (B2B) segment, JBM Auto has the broader consumer market (B2C) firmly in sight. The platform are primed and ready to extend its benefits to individual users as well, so everyone can experience the future of EV charging.

At JBM Electric Vehicles Pvt Ltd, we are charging ahead into a future where EV charging is not just a necessity but a seamless part of your journey. Our SaaS solution is designed to energize your electric vehicle experience, one charge at a time. Get ready to embrace a smarter, more efficient, and eco-friendly way to power your travels.





ACCELERATING E-MOBILITY WITH DIGITAL INNOVATION

In the rapidly evolving landscape of e-mobility, digitization has become more than a choice—it's a necessity. At JBM Auto, we're fully committed to digitization and automation across the entire vehicle development journey.

AI Advancements: We employ artificial intelligence to enhance vehicle safety, reduce costs, and optimize efficiency, ensuring safer and more efficient vehicles.

Data-Driven Ecosystem: Utilizing big data analytics, connectivity, and cloud computing, we've created a seamless EV ecosystem for our electric buses, benefiting operators and passengers alike.

Knowledge Empowerment: In FY24, we're digitizing knowledge management, bringing digital tools to every level of our organization for widespread benefits.

Our digitization efforts span key areas:

SAP Upgrade: We've streamlined e-invoicing, e-waybill, and GST returns with an upgraded SAP platform, ensuring GST compliance and enhancing critical functions.

Product Lifecycle Management: Adopting PLM software ensures detailed version control and product management, reducing compliance risks.

Manufacturing Efficiency: Our MES deployment improves product tracking and transparency, vital for compliance and quality.

SaaS Transition: We're migrating audits, assessments, and business processes to digital SaaS platforms for greater efficiency and flexibility.

At JBM Electric Vehicles Pvt Ltd, digitization drives our journey toward a cleaner, smarter, and more connected e-mobility future.

WORLD WIDE FOOTPRINT

10+ POWER PLANTS

5 ENGINEERING & DESIGN CENTRES

37 GLOBAL LOCATIONS

60 MANUFACTURING FACILITIES

25 EXPORTS TO 25 COUNTRIES

LUXURY ENVISIONED AND
COMFORT REDEFINED.

GALAXY 

KEY FEATURES


 1000~ 1500 KMS PER DAY

 ULTRAFAST CHARGING ~ 60 MINS

 LUXURY ON WHEELS

 40~60 PASSENGERS

 BEST IN CLASS HV SAFETY

 ~95% UPTIME



MAKING YOUR EVERYDAY
COMMUTE COMFORTABLE.

ECO-LIFE e12

KEY FEATURES

 400~500 KMS PER DAY

 50~60 PASSENGERS

 ULTRAFAST CHARGING ~ 60 MINS

 BEST IN CLASS HV SAFETY

 CONVENIENT ON THE GO

 ~95% UPTIME



PRODUCT TECHNOLOGY ECOSYSTEM



Energy Efficient

Energy optimization using a direct drive configuration and a sophisticated vector control system.

Minimizing losses through IGBT-based liquid-cooled inverter.

Most efficient EBS for maximizing regeneration.



Power Electronics

Efficient and safer operation using industry-proven IGBT and Silicon Carbide (SiC)-based technology.

Converters fitted with EMC filters to eliminate interface disturbances.

Components with low conduction losses leads to higher electrical efficiency.



Efficient Thermal Management

Active cooling system to protect thermal runaways.

Energy efficient scroll compressor for efficient battery cooling.

Coolant flow optimized using integrated electric pump.



Embedded System

Better control over vehicle aggregates through optimized and accurate monitoring.

User friendly Interactive GUI dashboard with thin-film transistor technology.

Unparalleled flexibility for customization through model based software.



Ultrafast Charging

Dual gun charging up to 500 kW power.

Safe charging with dedicated isolation management.

Highly efficient European-standard CCS2 charging system.

EXTENDED RANGE ELECTRIC BUSES



APPLICATION



Supporting the launch of various models

With "high energy density, high safety, long life, fast charging / high power, all climate" as the core competitiveness, our products can fully support the first line brand OEM models. We have cooperated with leading Chinese and foreign passenger car enterprises on the launch of many models, thanks to our incomparable advantages in mass production and delivery capacity in the support.



Full application scenario coverage

With "long life, high energy density, high safety, all climate, standardization and scalability" as the core competitiveness, our products cover all fields of commercial vehicles like pure electric bus, commuter, logistics vehicle, engineering machinery, etc. The vehicles supported by our products have been widely used in the scenarios such as high temperature, high humidity, remote plateau, high cold and low pressure, and our delivery of supporting quantity is leading in the industry.



Industry leading in total installation capacity

With "high safety, long life, high economic efficiency and high integration rate" as the core competitiveness, our energy storage integrated system services are provided to meet various needs, covering the application fields of power generation side wind optical storage, grid side peak shaving and frequency regulation, user side peak load sharing, standby power supply and marine energy storage. As one of the first national energy storage demonstration projects, the energy storage products delivered by CALB have been widely used in the scenarios such as offshore islands, remote plateau, high cold and low pressure, and the total installation capacity of energy storage projects is leading in the industry.

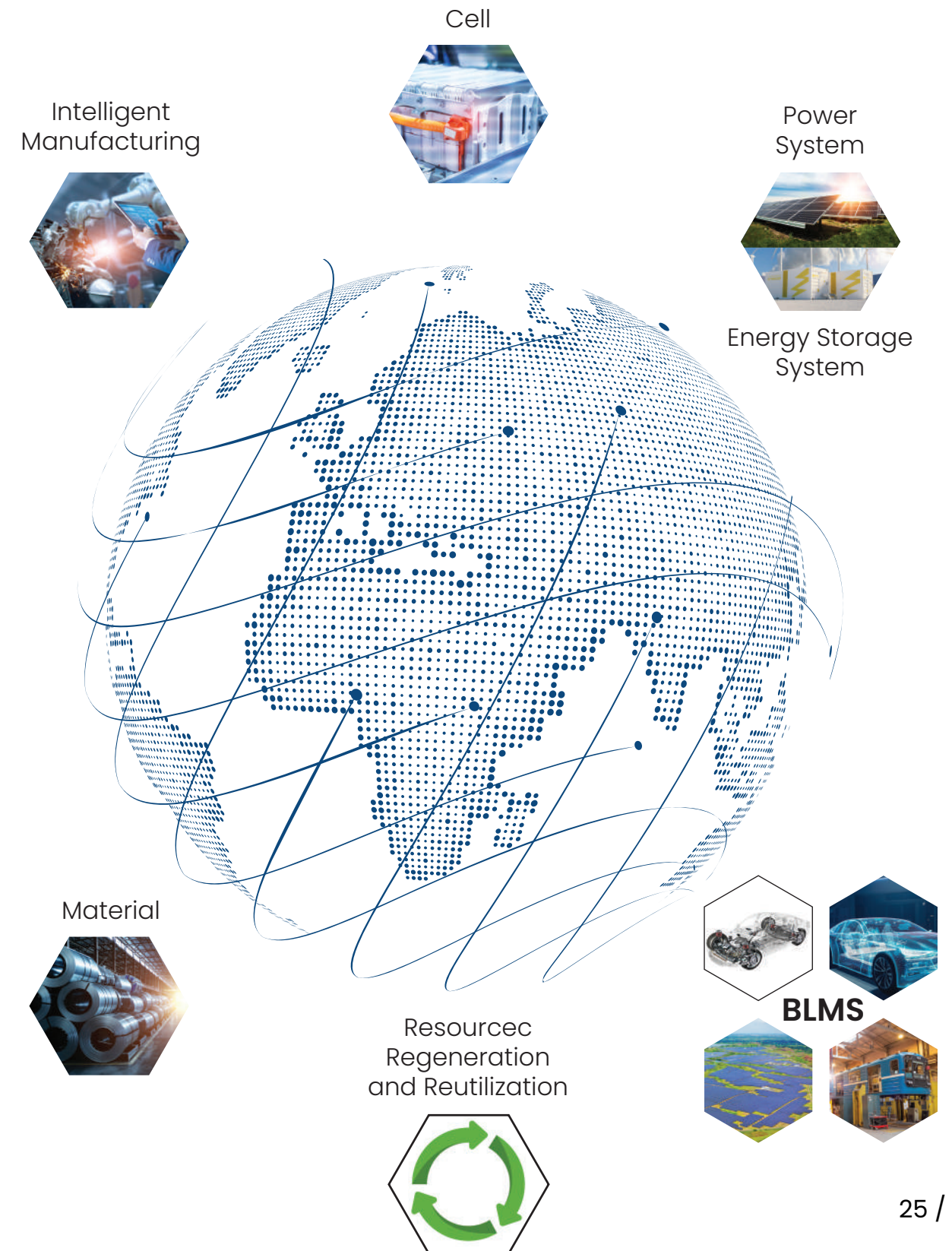
PRODUCT

Leading Product & Technology Strategy
Building the benchmark of advanced manufacturing industry



PRODUCT SYSTEM

Ultimate balance of energy and resource
Ultimate balance of energy and safety
High integration of design and manufacturing



**Corp. Office**

Plot No.9, Institutional Area,
Sector 44, Delhi-NCR - 122003

Sales & Marketing Office

JBM Electric Vehicle Pvt. Ltd.
601, Hemkunt Chambers 89,
Nehru Place, Delhi-NCR - 110019

www.jbmbuses.com
www.jbmgroup.com

corp.communications@jbmgroupp.com

Enquiry No.
+91-9953110455 (East & South)
+91-9953993923 (North)
+91-8238144400 (West)

Landline No.
+91-11-26427104, 42099900